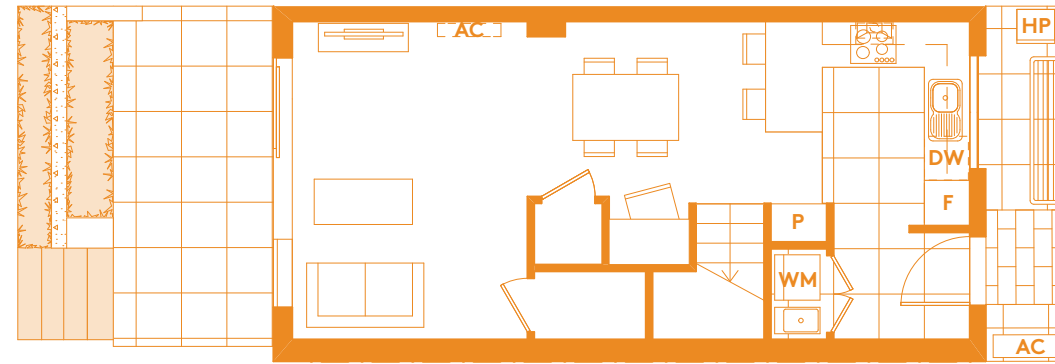
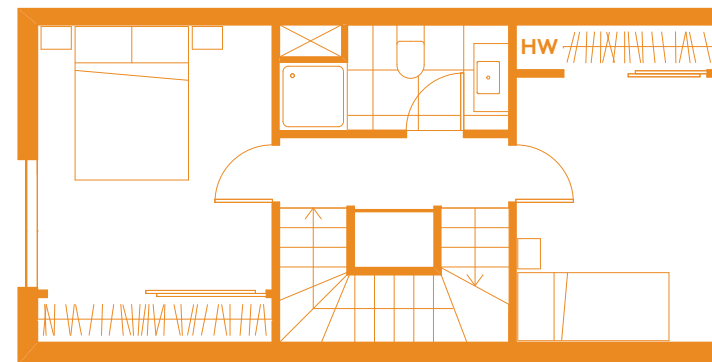




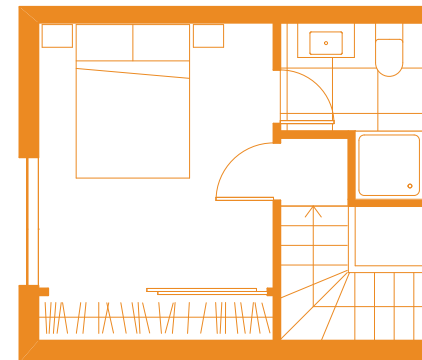
GROUND



FIRST



SECOND



# Kerewhenua Terrace House 63, 64



SCALE FOR 1:100 DRAWING AT A3

LOT AREA

65m<sup>2</sup>

DWELLING AREA

88m<sup>2</sup>

TYPE

N2

BEDROOMS

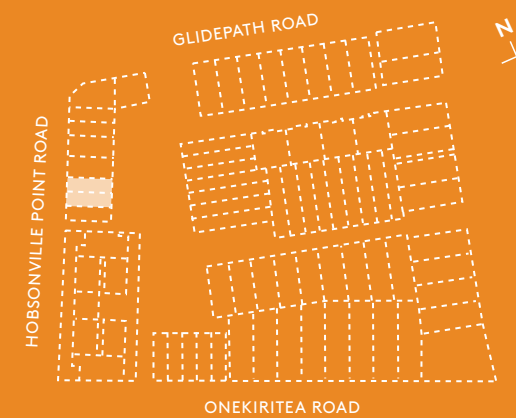
3

BATHROOMS

2

CARPARKS

1



## DISCLAIMER

Any outline plan and specifications, preliminary subdivision plan showing the concept of the Kerepeti development, the property (terraced house or unit), specifications or laneway society budgets (Information) have all been prepared prior to the completion of construction of the development. Whilst every reasonable effort has been made to ensure the information and calculations correctly illustrate the development and the property (terraced house or unit), they can only be used for guidance and no responsibility will be taken for any differences, changes or errors or omissions which may become apparent whether before or after completion of the Kerepeti development and the finalisation of "as built" plans, specifications and calculations. The Information is subject to change and subject to contract. It will be superseded by any plans and/or specifications and other such information contained in any such contract entered into in respect of the Kerepeti development which will be subject to the terms of that contract.